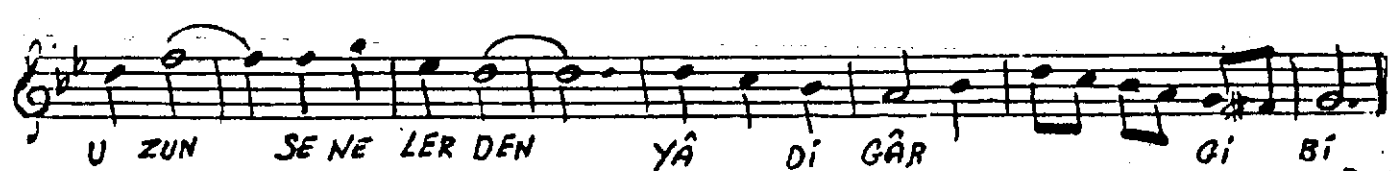
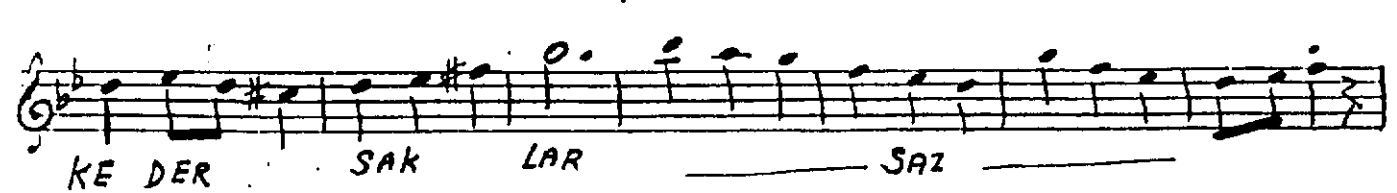
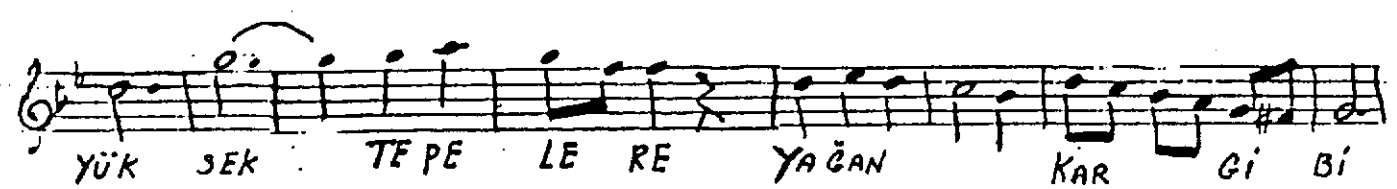
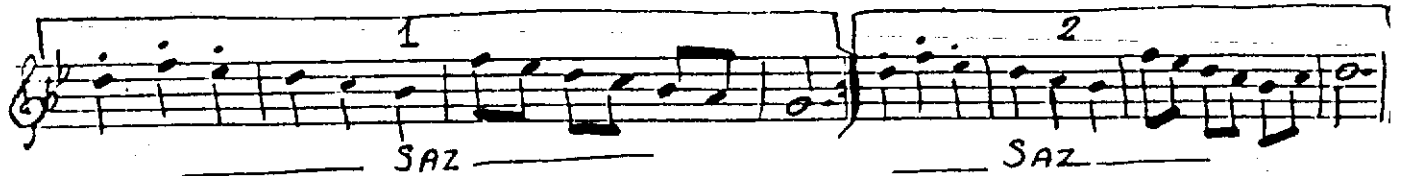
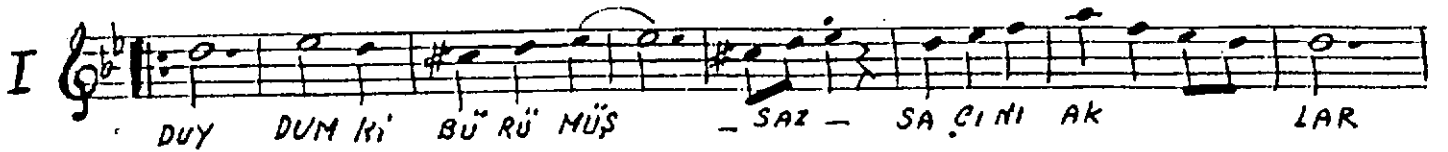


NIHAVEND ŞARKI
(DUYDUMKI)

(J: 144) ⊕



GÖ RÜN ME RÜ YÂ MIN BAHÇE LE RİN DE - SAZ -

KAL HA YÂ LIM DE Kİ ES Kİ YERİN DE - SAZ -

KAL HA YÂ LIM DE Kİ ES Kİ YE RİN DE

- SAZ - TAH TİN DAN İN ME YEN HÜ KÜM

DAR Gi Bi -SON-

22.1.1993

B. İ. İ.

DUYDUM Kİ BÜRÜMÜŞ SAÇINI AKLAR
YÜKSEK TEPELERE YAĞAN KAR GİBİ
YÜZÜNDE HER ÇİZGİ BİR KEDER SAKLAR
UZUN SENELERDEN YADIGAR GİBİ...

BU HALİNLE GELİP GÜNÜN BİRİNDE
GÖRÜNME RÜYAMIN BAHÇELERİNDE
KAL HAYALİMDEKİ ESKİ YERİNDE
TAHTINDAN İNMEYEN HÜKÜMDAR GİBİ...

Şehremini